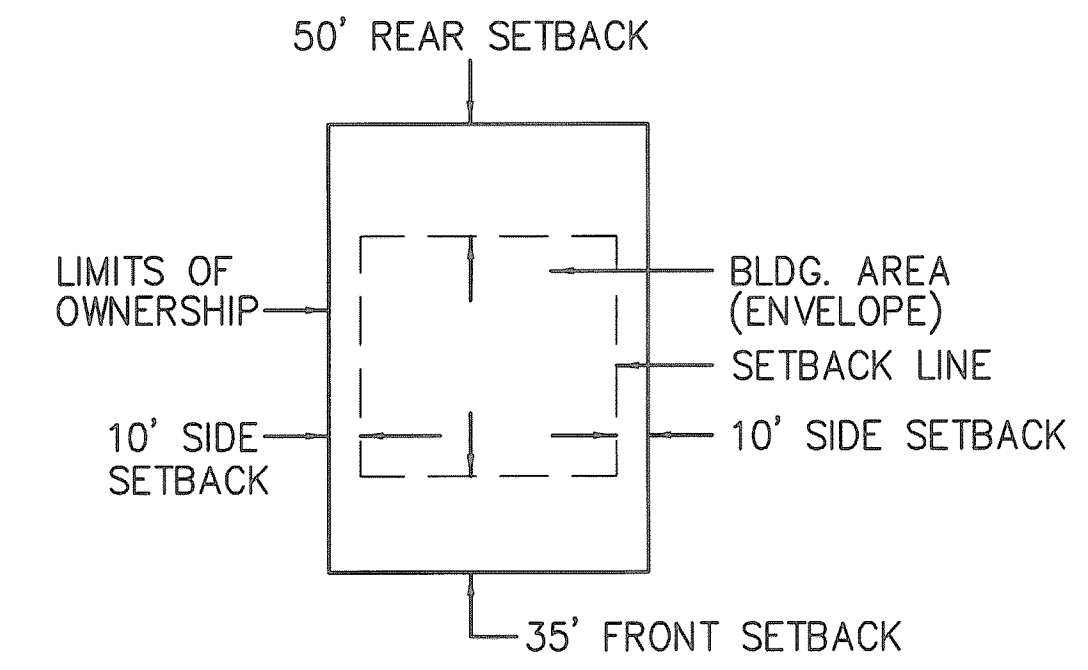


LIMITED COMMON ELEMENT SHARED DRIVEWAY FOR UNITS 4 THRU 7
66' WIDE

LIMITED COMMON ELEMENT SHARED DRIVEWAY FOR UNITS 1, 2 AND 3
66' WIDE

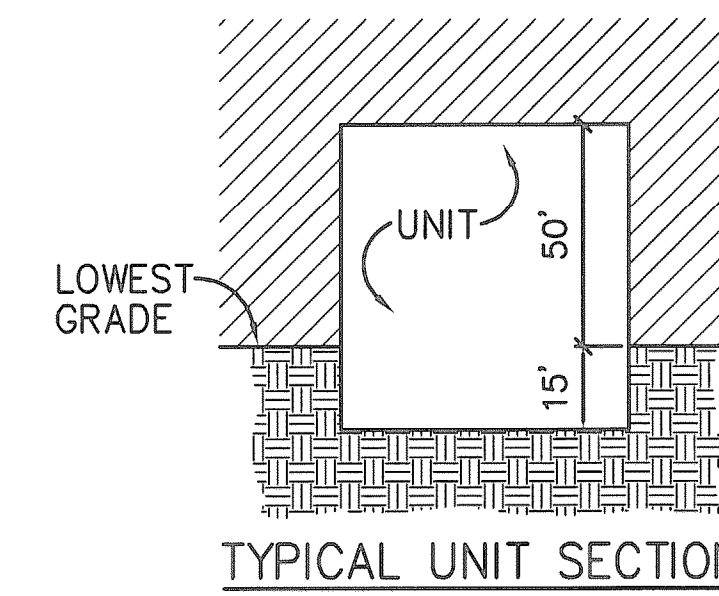
WEST LINE OF CARMER ROAD

CARMER ROAD (66' WIDE) - PUBLIC
S00°21'32"E 791.75'



LOCATION MAP
NO SCALE

UNIT PLAN VIEW
ALL SETBACKS ARE TYPICAL UNLESS OTHERWISE SHOWN

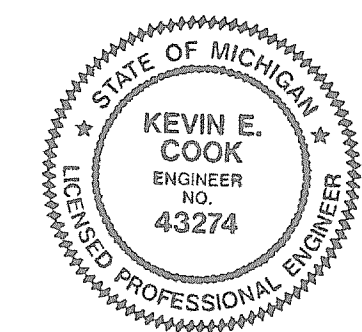


NOTES:

- FOR BEARINGS AND DISTANCES FOR THE GENERAL COMMON ELEMENT ROAD SEE SHEET 2.
- ALL IMPROVEMENTS SHOWN ON THIS PLAN SERVICING UNITS 1 THRU 8 "MUST BE BUILT".

LEGEND

- GENERAL COMMON ELEMENT
- LIMITED COMMON ELEMENT
- LIMITED COMMON ELEMENT FOR SHARED DRIVEWAYS
- UNIT AREA (AREAS THAT ARE NOT CROSS HATCHED)
- UNIT AREA WITHIN 100 YEAR FLOODPLAIN-LIMITED COMMON ELEMENT
- 60 UNIT NUMBERS
- 56 COORDINATE NUMBER
- N 4876.76 NORTH COORDINATE VALUES
- E 4865.93 EAST COORDINATE VALUES



Kevin E. Cook
KEVIN E. COOK
REGISTERED CIVIL ENGINEER, NO. 43274

12/17/2012
DATE



POINT AVENUE (40' WIDE)
(PLATTED AS PUBLIC - MAINTAINED AS PRIVATE)
S89°00'00"E 557.42'

SOUTH LINE OF POINT AVENUE
S89°00'00"E 200.00'

N00°26'05"W 730.23'

W.55°16'08S 210.00'

S75°52'40"W 176.26'

N46°55'52"W 90.06'

N61°51'43"W 124.88'

P.O.B.

EAST LINE OF "RUNYAN LAKE POINT"
S00°11'36"W 452.87'
NE CORNER PLAT OF "RUNYAN LAKE POINTE"
LIBER 3, PAGE 38

SITE COORDINATES

① N 5941.2033 E 4054.9763	⑥ N 5152.1017 E 4170.6348	⑪ N 5440.7319 E 4455.3848	⑬ N 5890.3162 E 4105.3637	⑰ N 5888.6601 E 4200.2437	⑲ N 5668.0792 E 4466.8036	⑳ N 5431.0452 E 4505.4464	㉑ N 5143.5704 E 4405.9804	㉒ N 5237.4554 E 4399.5297	㉓ N 5253.4442 E 4341.2984	㉔ N 5380.6236 E 4297.9450	㉕ N 5511.7439 E 4323.0729
② N 5931.4750 E 4612.3144	⑦ N 5210.9941 E 4060.5155	⑫ N 5130.9155 E 4193.3020	⑭ N 5722.8775 E 4106.6339	⑱ N 5887.8715 E 4245.4227	㉑ N 5559.3686 E 4579.6442	㉒ N 5431.5150 E 4580.4450	㉓ N 5141.3585 E 4397.1892	㉔ N 5213.4638 E 4413.2840	㉕ N 5302.7612 E 4315.2048	㉖ N 5451.5059 E 4260.8473	㉗ N 5487.9078 E 4347.2094
③ N 5139.7399 E 4617.2731	⑧ N 5938.0591 E 4235.1081	⑬ N 5159.8987 E 4156.0557	⑭ N 5680.0381 E 4132.7090	⑱ N 5885.0783 E 4405.4433	㉑ N 5451.5146 E 4580.3197	㉒ N 5350.5166 E 4580.9523	㉓ N 5182.0889 E 4390.3375	㉔ N 5214.5192 E 4581.8040	㉕ N 5312.6612 E 4312.4713	㉖ N 5480.3791 E 4253.1194	㉗ N 5488.3215 E 4407.9282
④ N 5133.6065 E 4407.3627	⑨ N 5934.9168 E 4415.1314	⑫ N 5159.8987 E 4156.0557	⑭ N 5652.6772 E 4158.0083	⑱ N 5885.0783 E 4406.9090	㉑ N 5450.8121 E 4468.1643	㉒ N 5350.0468 E 4505.9537	㉓ N 5211.4075 E 4387.5404	㉔ N 5273.2267 E 4421.4332	㉕ N 5428.2430 E 4420.4623	㉖ N 5486.2870 E 4249.9188	㉗ N 5444.4174 E 4408.2032
⑤ N 5090.6004 E 4236.4280	⑩ N 5440.4992 E 4418.2280	⑬ N 5159.8987 E 4156.0557	⑭ N 5527.2346 E 4237.6812	⑱ N 5593.7283 E 4202.4810	㉑ N 5526.6489 E 4467.6894	㉒ N 5148.7198 E 4582.2162	㉓ N 5223.1697 E 4374.4499	㉔ N 5237.4183 E 4358.9721	㉕ N 5338.8193 E 4309.5402	㉖ N 5486.2870 E 4249.9188	㉗ N 5511.2451 E 4249.8690

DRAWN BY:	J.D.A.	REVISIONS	DATE
CHECKED BY:	G.M.M.		
APPROVED BY:	K.E.C.		
DRAWING NAME:	CONDO		

CHMP INC.
5198 TERRITORIAL RD. CONSULTING ENGINEERS, SURVEYORS, & ARCHITECTS GRAND BLANC MI. 48439

RUNYAN LAKE EAST CONDOMINIUM
SITE PLAN

DATE DRAWN	1-31-08	SCALE	
DATE REVISION		HORIZONTAL:	1"=40'
AS BUILT DATE		VERTICAL:	
JOB NO.	02006000	SHEET	4 OF 5

PROPOSED DATE: DECEMBER 17, 2012