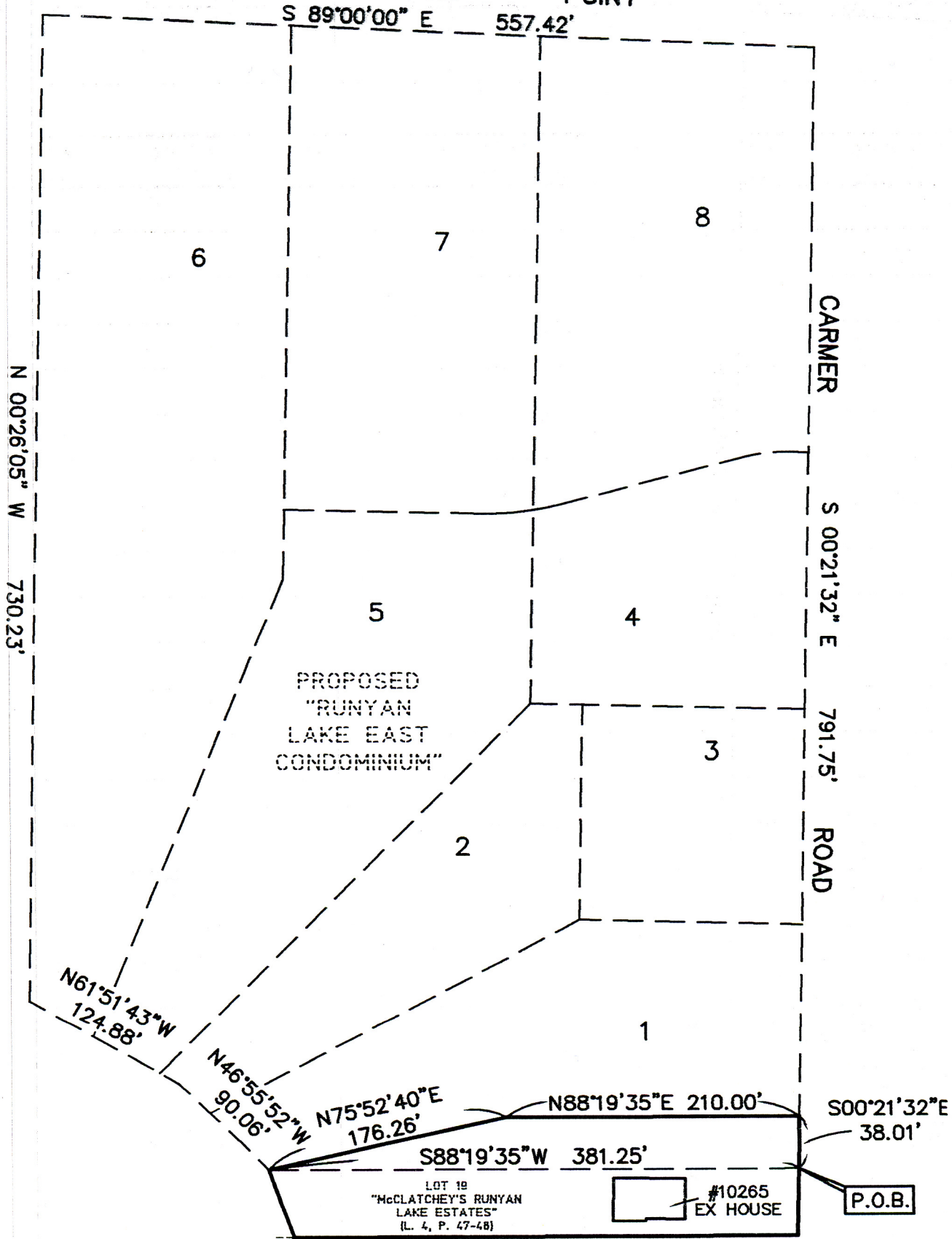


RUNYAN LAKE POINT



PROPOSED  
"RUNYAN  
LAKE EAST  
CONDOMINIUM"

5

7

8

CARMER  
ROAD

S 00°21'32" E

791.75'

ROAD

3

4

2

1

S00°21'32"E  
38.01'

LOT 19  
"McCLATCHEY'S RUNYAN  
LAKE ESTATES"  
(L. 4, P. 47-48)

#10265  
EX HOUSE

P.O.B.